



2 Riverlight Quay, London
SW11

GARTONJONES.COM



2 Riverlight Quay, London , SW11

£555 Per Week

A spacious Manhattan Suite apartment of approx. 439sq.ft (40.80sq.m.) in Riverlight Quay, a popular residential complex on the banks of the River Thames. The property has a double bedroom with a sliding door to an open plan reception room with a smart integrated kitchen, floor to ceiling windows, a luxury bathroom suite and full-width balcony. Residents of Riverlight Quay benefit from exclusive facilities to include a fantastic Heated Swimming Pool, Jacuzzi, Sauna and Steam Room as well as a well-equipped mezzanine “river view” Gymnasium. There is also a reception lounge and library, 24-hour concierge and a private cinema screening room and virtual golf room. The on-site amenities include the Black Cab Coffee Co, Nine Elms Tavern and Waitrose supermarket and there are plenty of nearby restaurants and bars adding to the increasing vibrancy of Nine Elms. Nine Elms Tube Station and Battersea Power Station Northern Line tube stops are both a short walk away from Riverlight Quay.

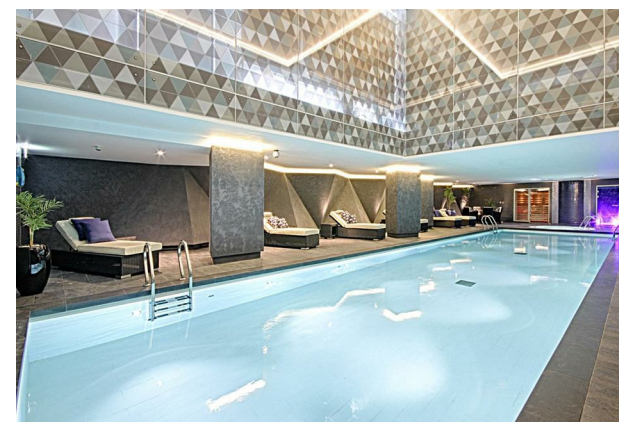
Please note furniture may differ to that shown in the current photos.

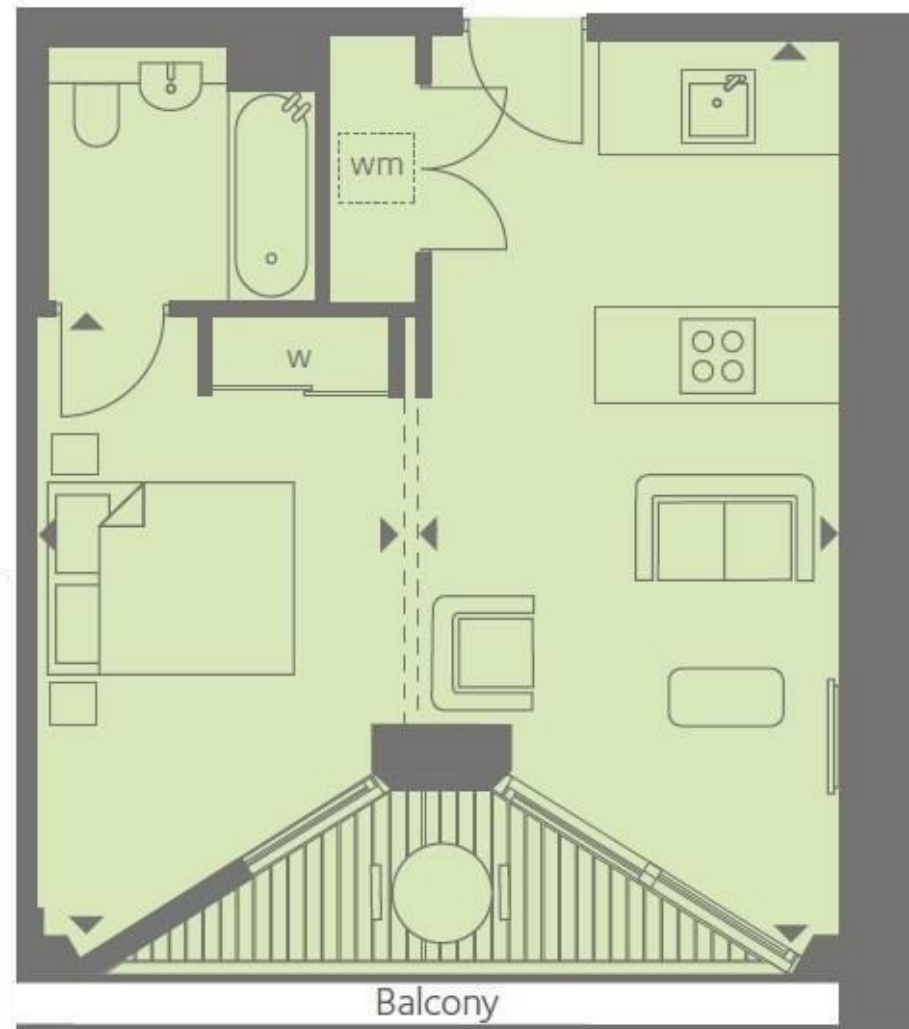
- Manhattan Suite Apartment
- 439sq.ft (40.8sq.m)
- Open Plan Reception
- Parking Available via Separate Negotiation
- Balcony
- 24 Hour Concierge
- Residents Gym
- Swimming Pool, Spa, Sauna & Steam Room
- Cinema Screening Room & Virtual Golf
- 0.3 Miles from Battersea Power Station Tube

GARTON JONES.COM

9 Albert
Embankment
London
SE1 7SP

Lettings:
+44 (0) 20 7735 1888
nineelms@gartonjones.com
www.gartonjones.com





INTERNAL AREA M ² / SQ FT	40.80 / 439
--------------------------------------	-------------

